

Niðurstöður úr könnun á  
útgreiðslu húsaleigubóta

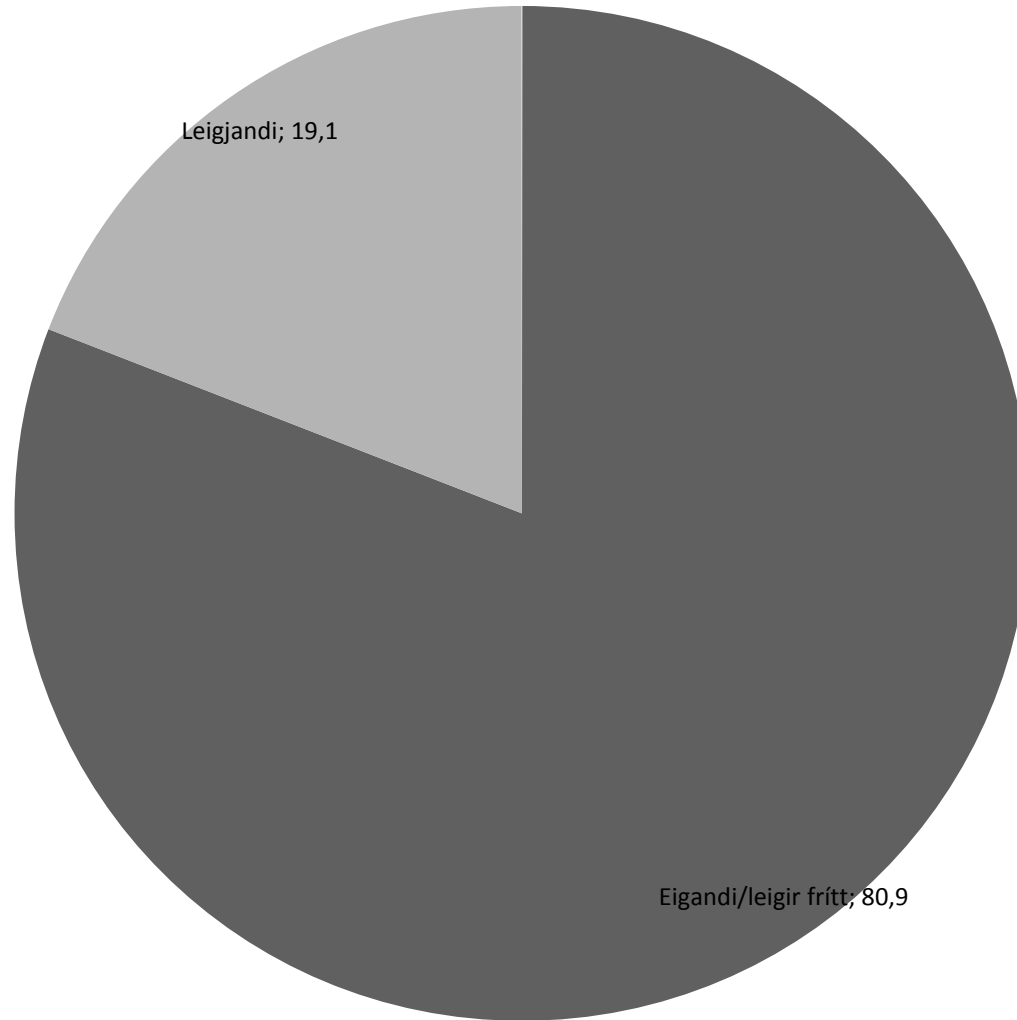
**UM KÖNNUN**

# Um könnun

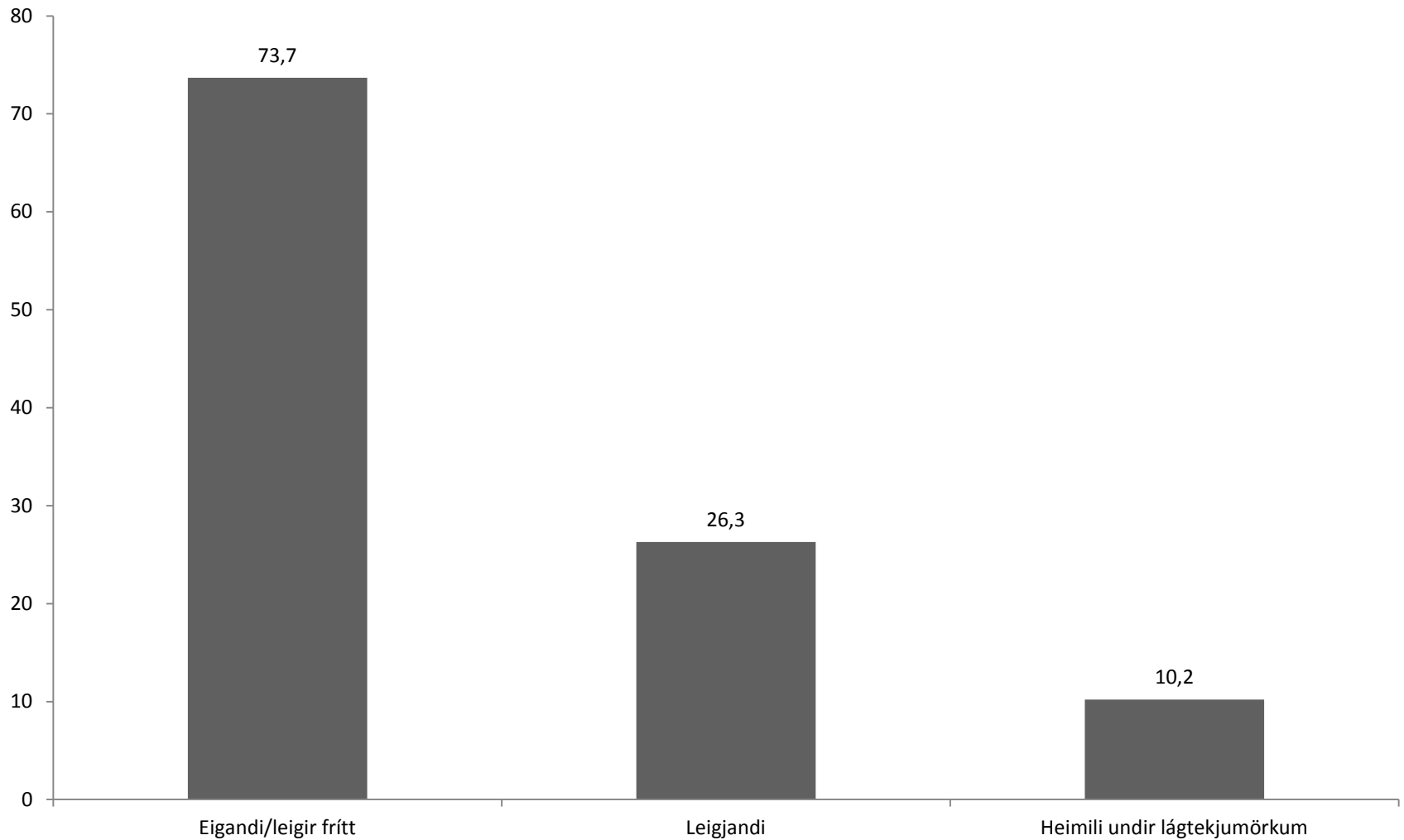
- Spurningalisti sendur á sveitarfélögin
- Viðmiðunartími: 1. september 2012
- 64 sveitarfélög svöruðu
- 97,02% mannfjöldans

# **LEIGJENDUR OG HÚSALEIGUBÓTAÞEGAR**

Hlutfall heimila sem leigir borið saman við hlutfall heimila í eigin húsnæði/leigir frítt. Lífskjarakönnun Hagstofu Íslands, 2009. Birt í félagsvísunum.

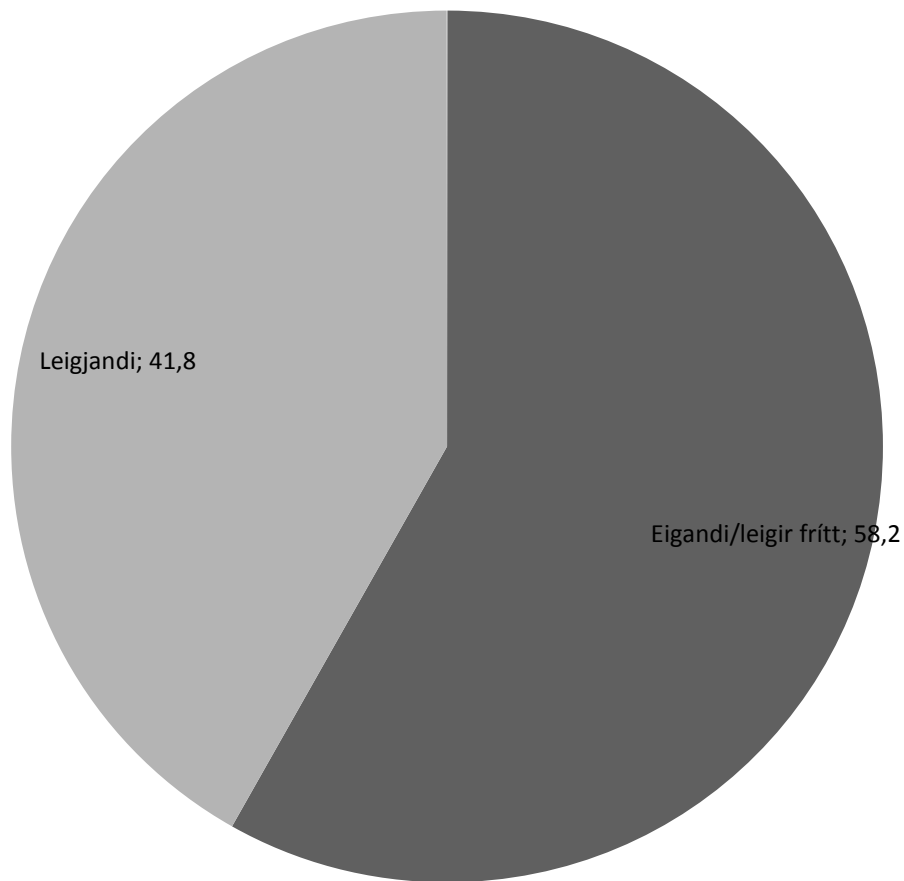


Hlutfall heimila sem leigir borið saman við hlutfall heimila í eigin húsnæði/leigir frítt. Fólk undir lágtekjumörkum. Lífskjarakönnun Hagstofu Íslands, 2009. Birt í félagsvísunum.

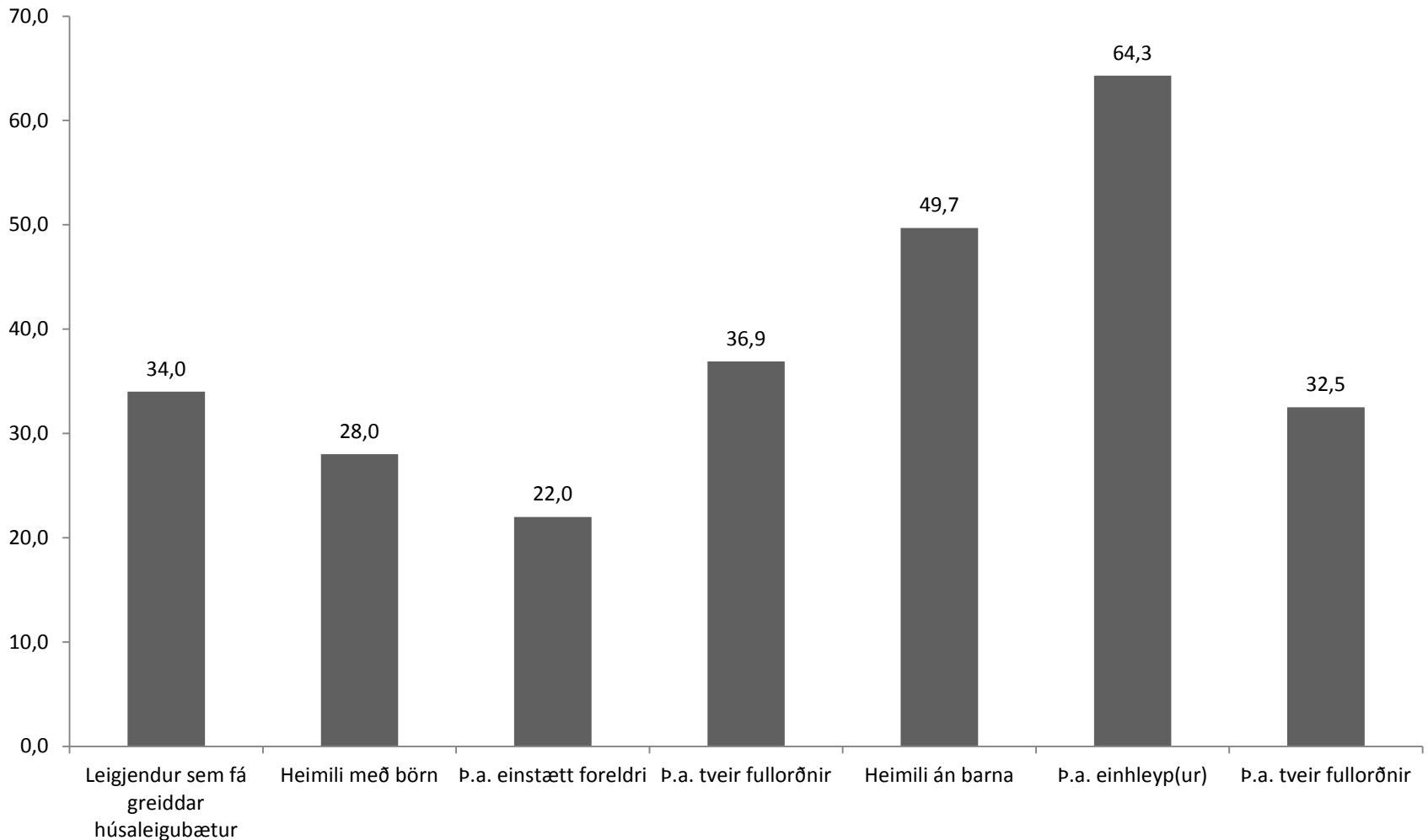


Hlutfall heimila sem leigir borið saman við hlutfall heimila í eigin húsnæði/leigir frítt. Einstæðir foreldrar. Lífskjarakönnun Hagstofu Íslands, 2009. Birt í félagsvísunum.

### Einstæðir foreldrar



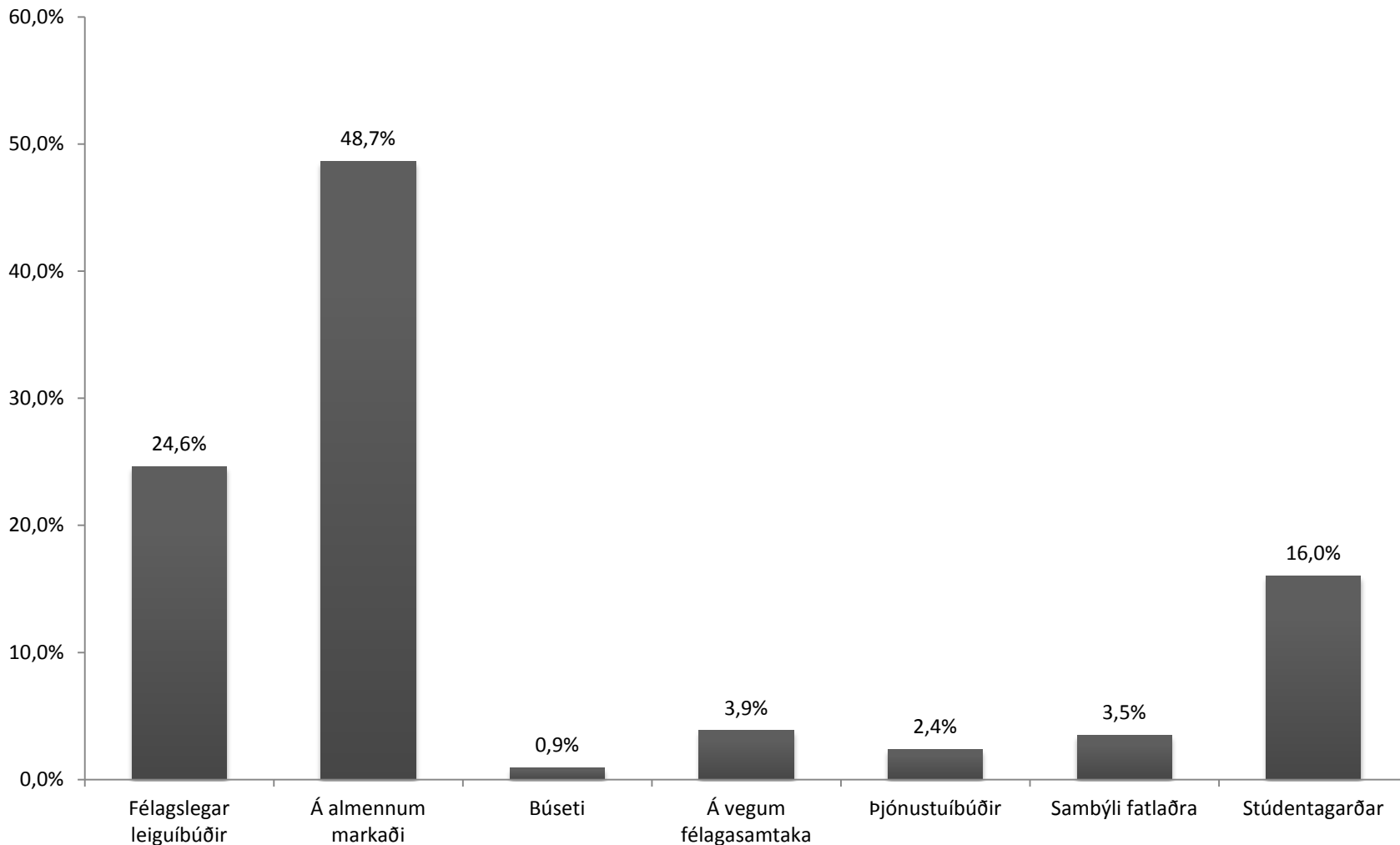
# Leigjendur sem fá húsaleigubætur, 2009, úr lífskjarakönnun Hagstofu Íslands, birt í Félagsvísunum



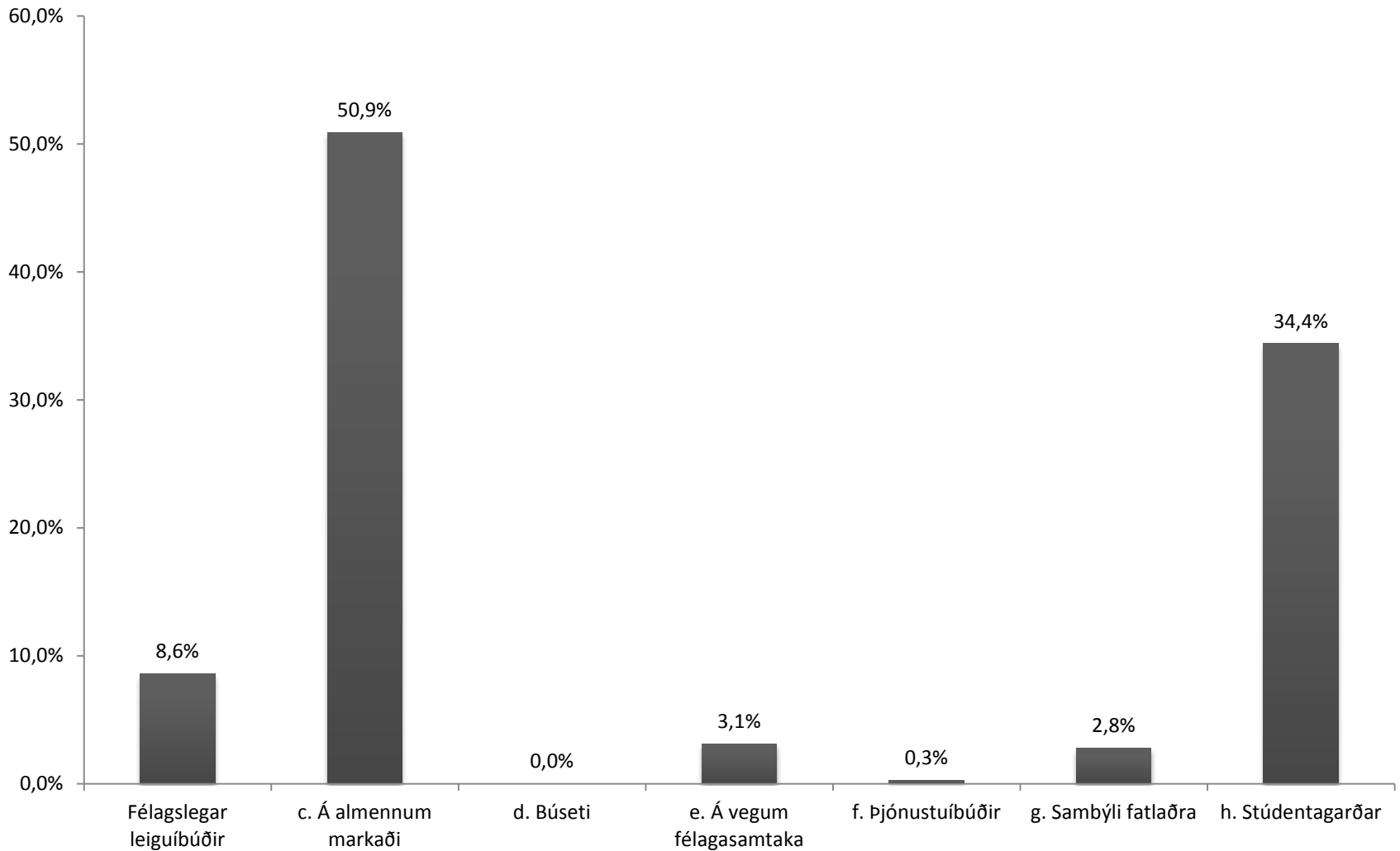


**HÚSALEIGUBÓTAÞEGAR**

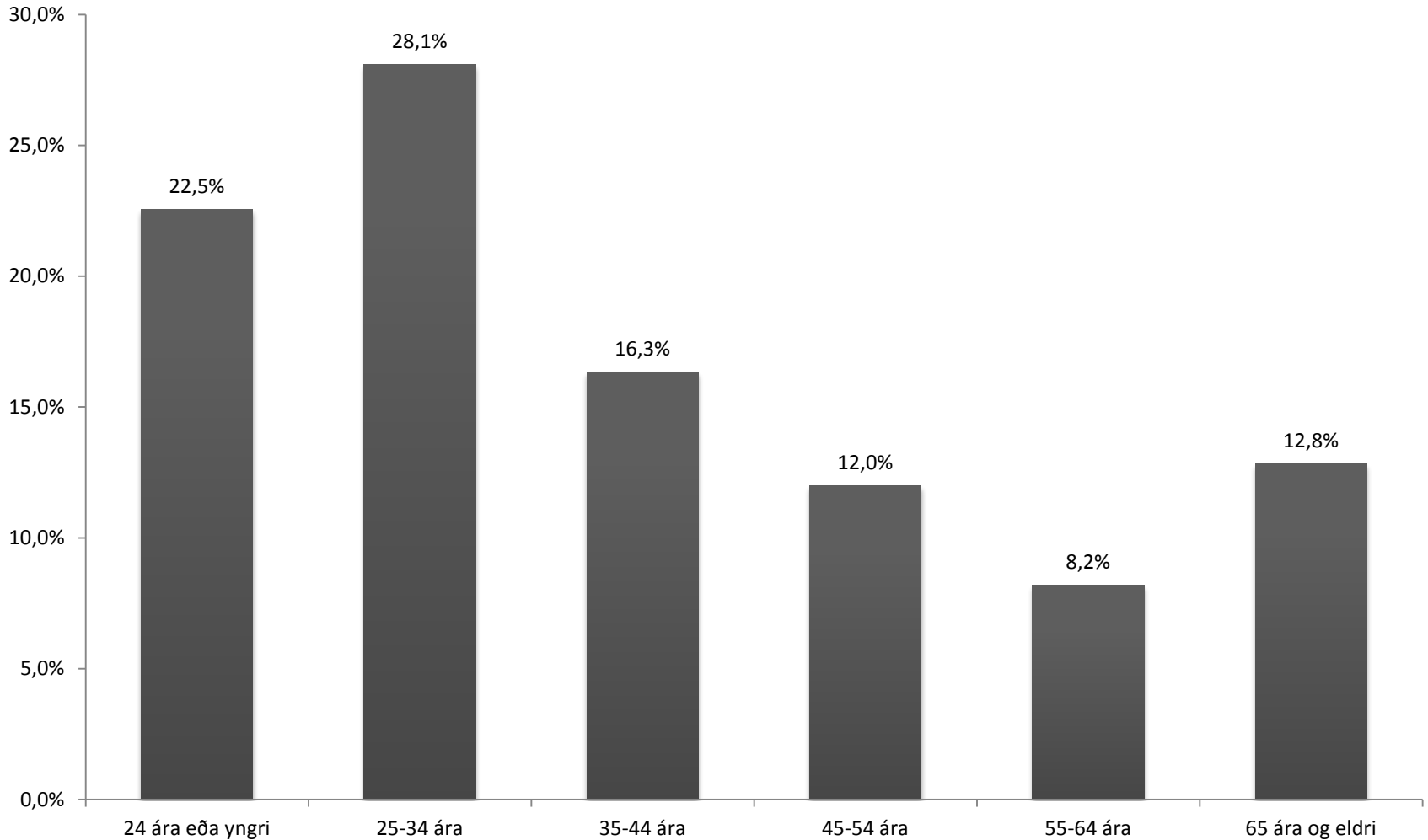
# Skipting húsaleigubótaþega eftir tegundum leiguhúsnæðis



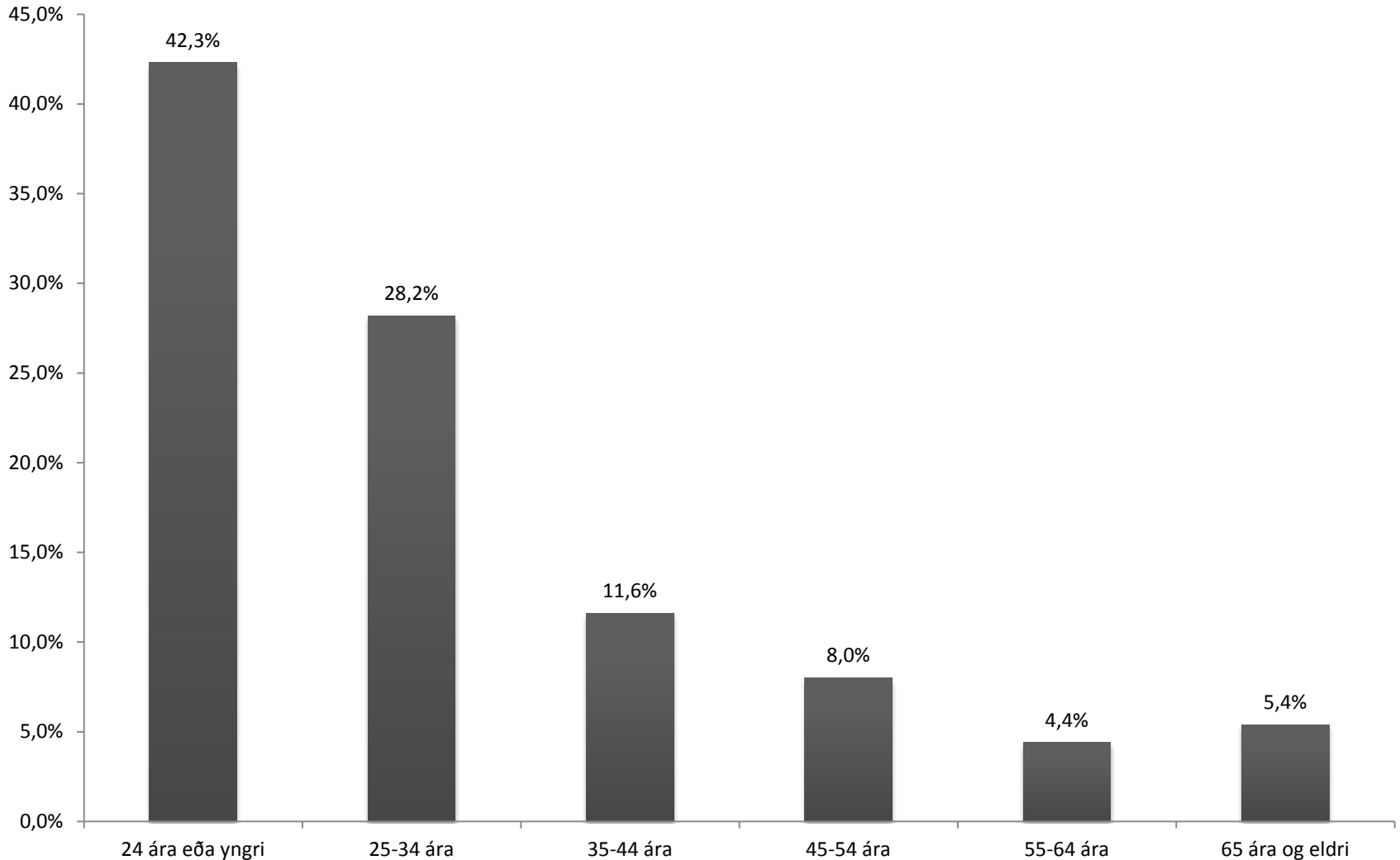
# Skipting nýrra umsækjenda um almennar húsaleigubætur eftir tegundum leiguhúsnæðis



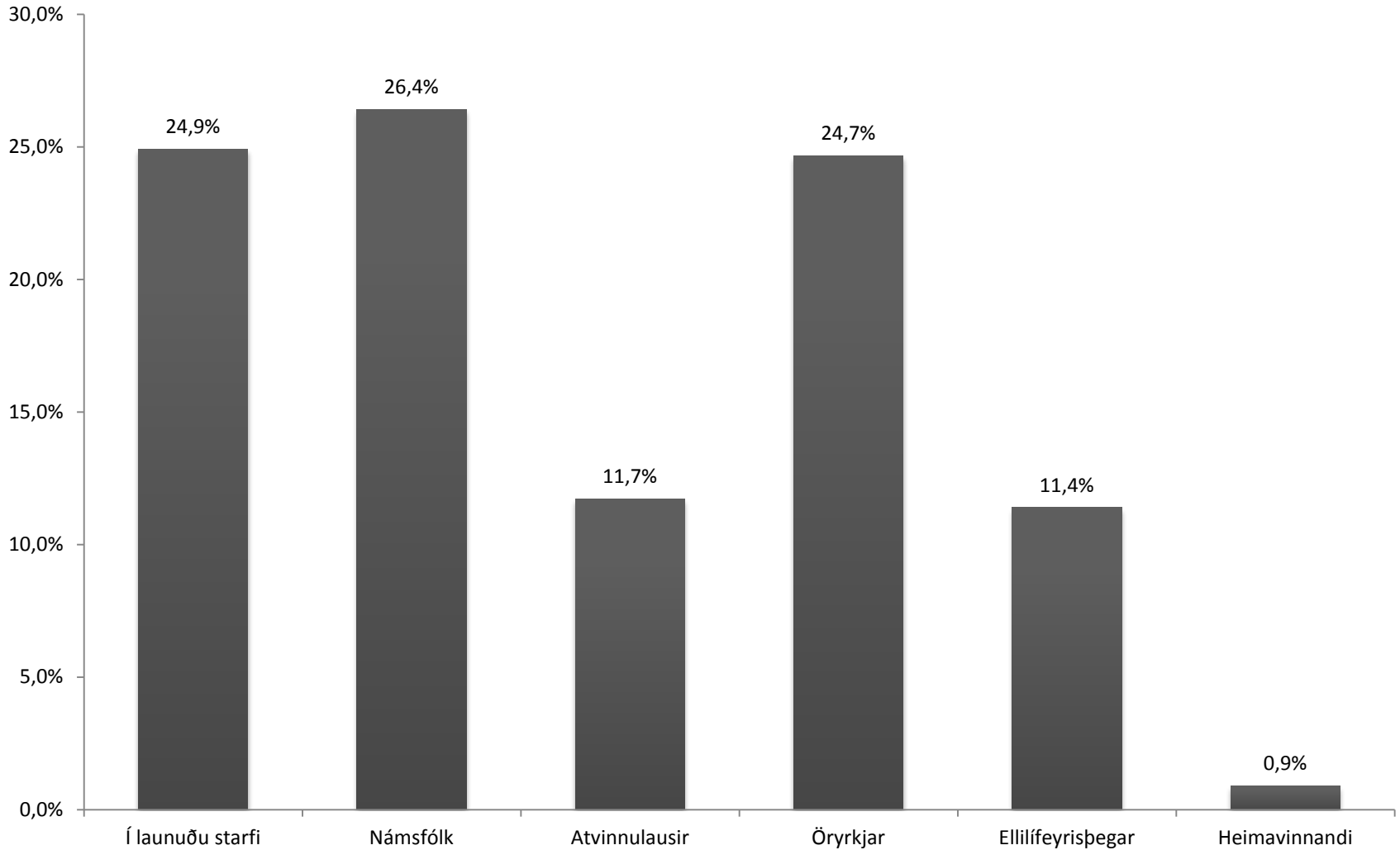
# Skipting húsaleigubótaþega eftir aldri



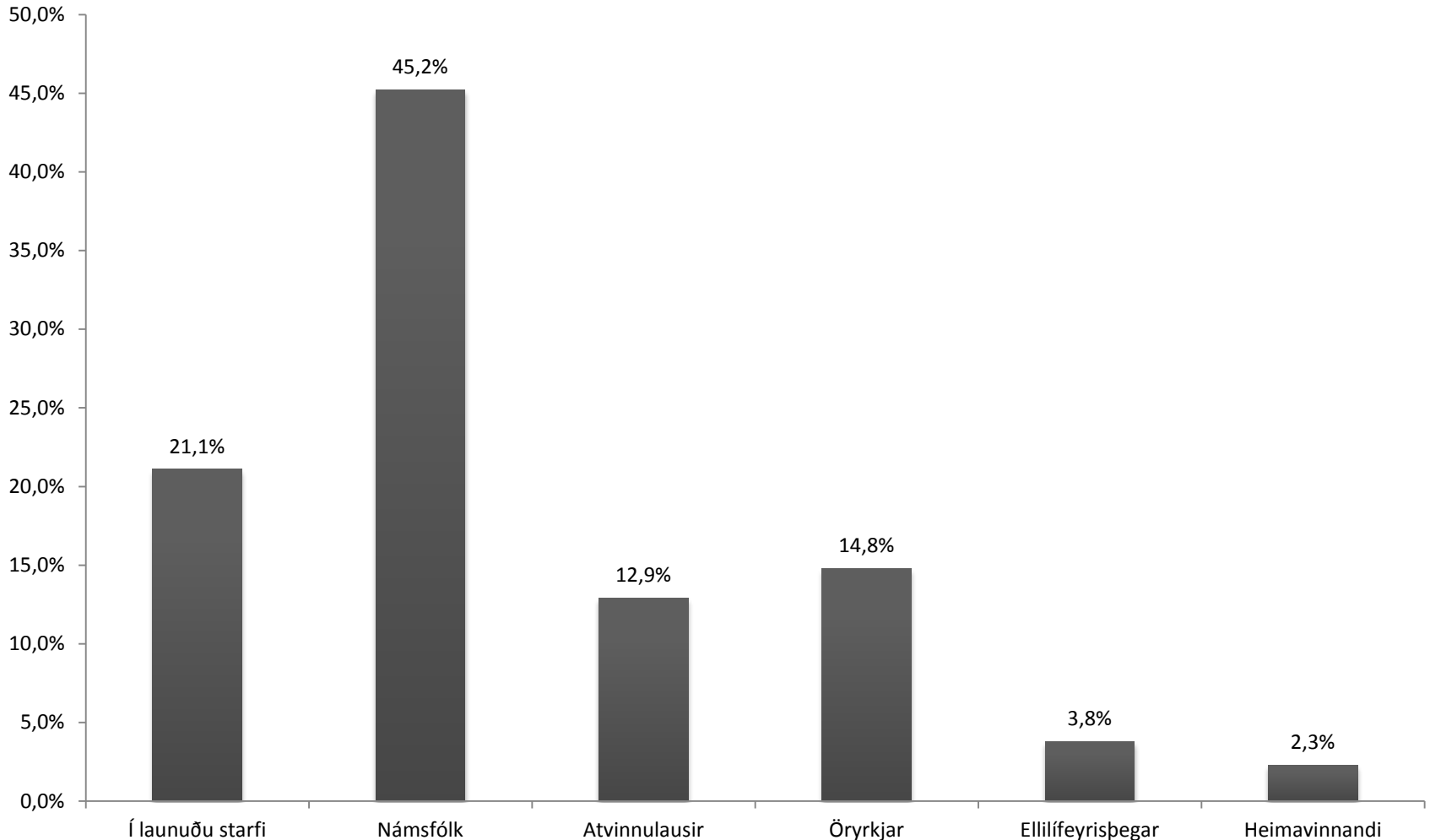
# Aldursskipting þeirra sem sóttu um almennar húsaleigubætur



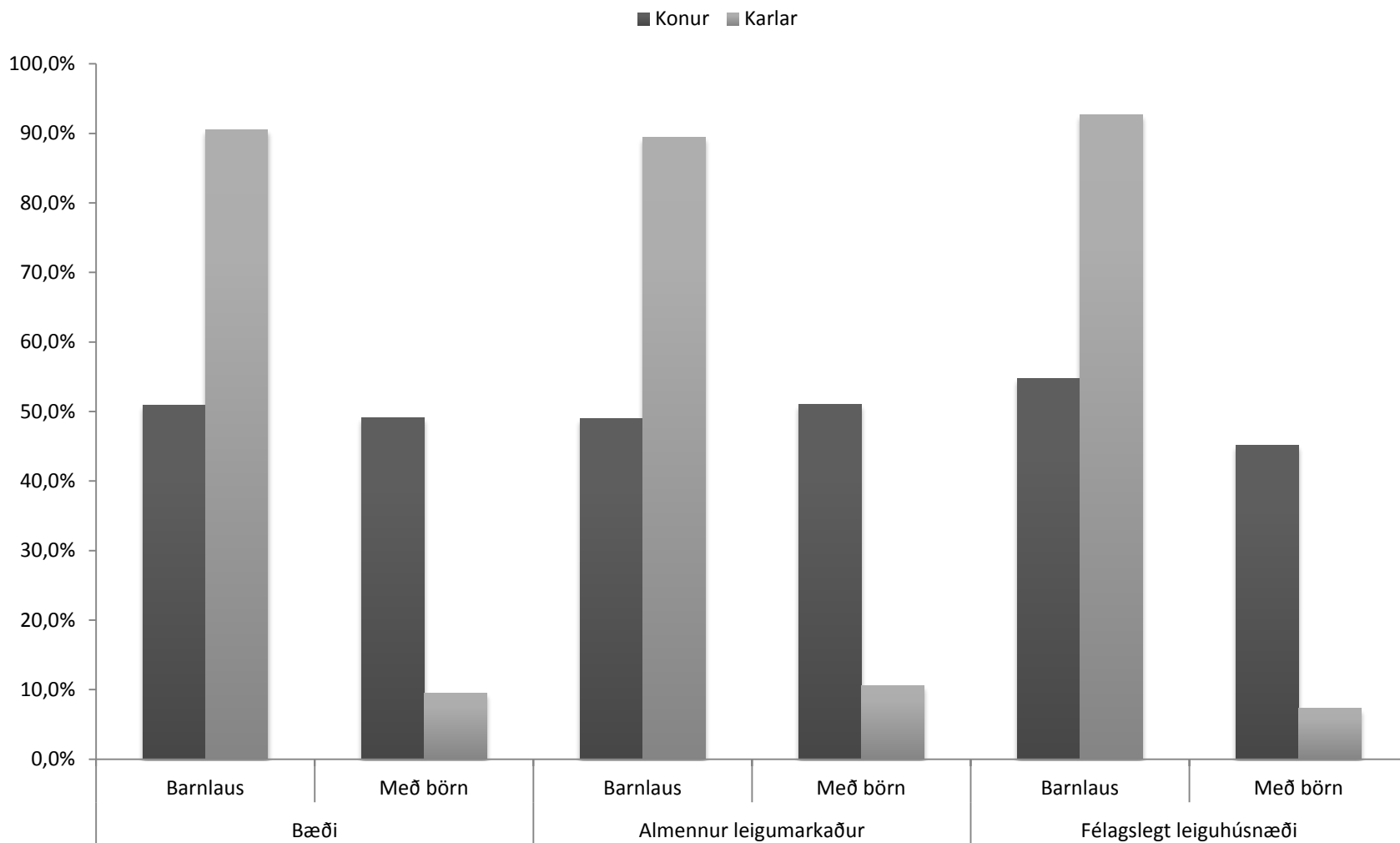
# Húsaleigubótaþegar eftir atvinnustöðu



# Skipting umsækjenda um almennar húsaleigubætur eftir atvinnustöðu

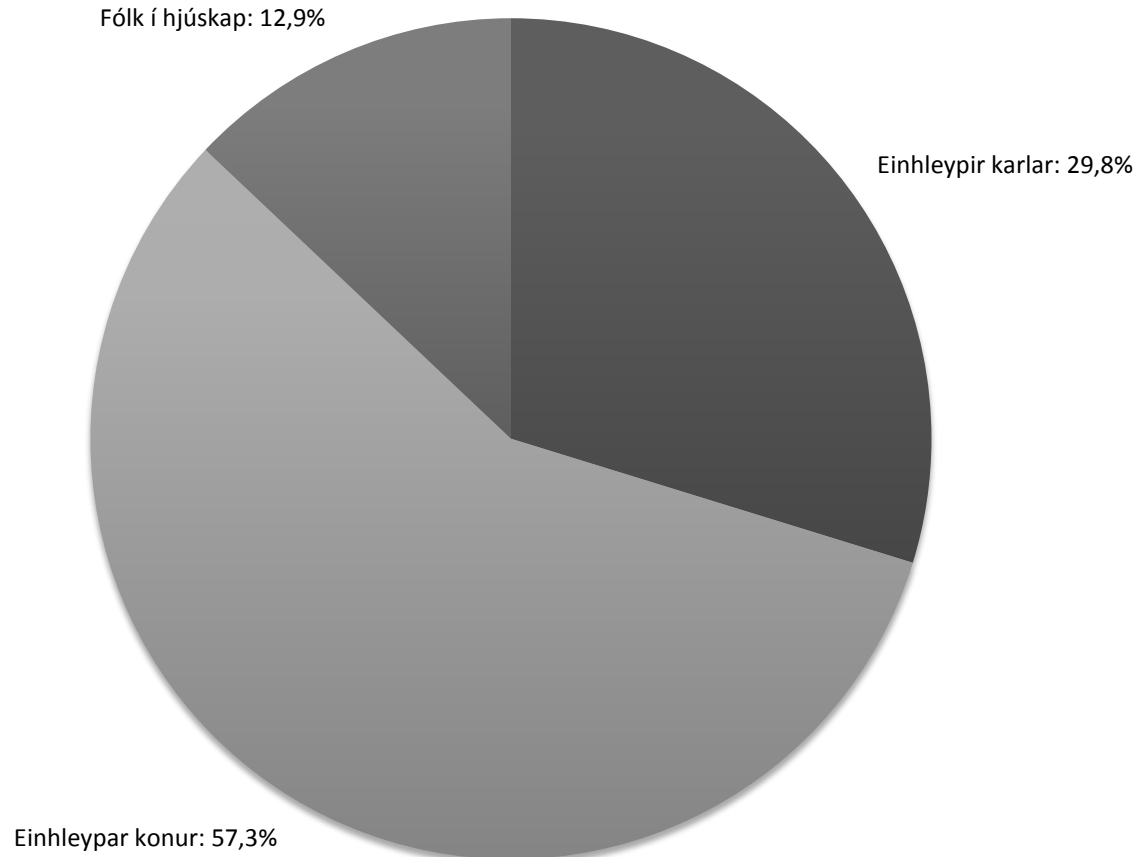


# Húsaleigubótaþegar eftir kyni og fjölskylduaðstæðum eftir tegund leiguhúsnæðis

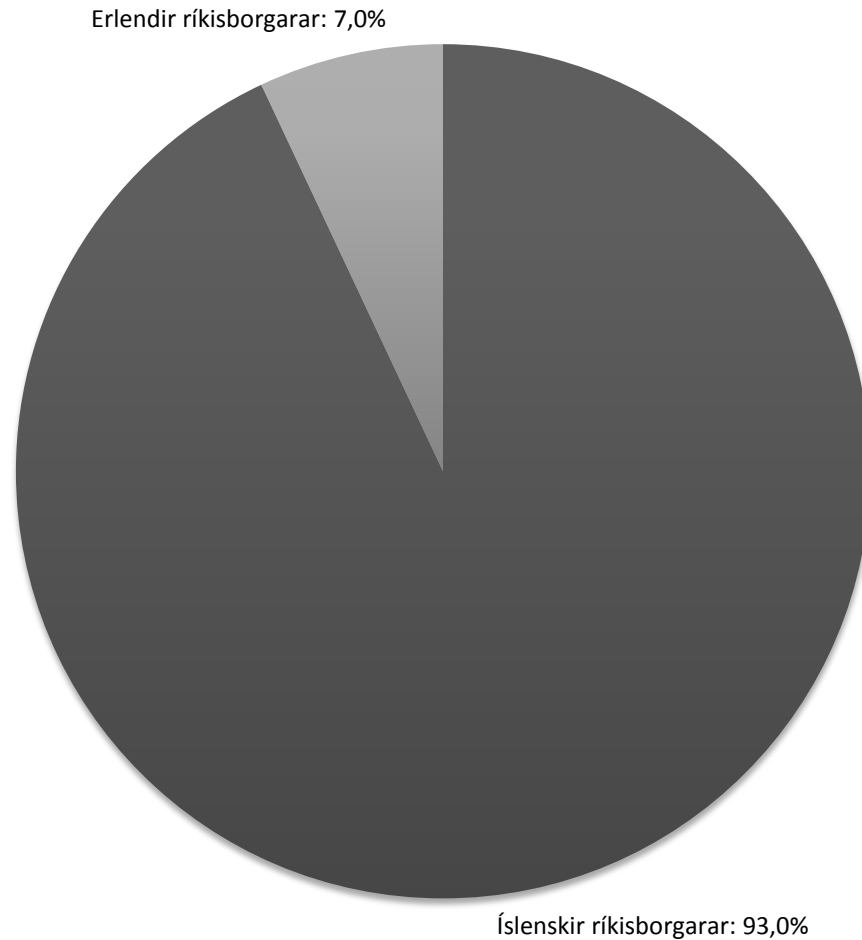




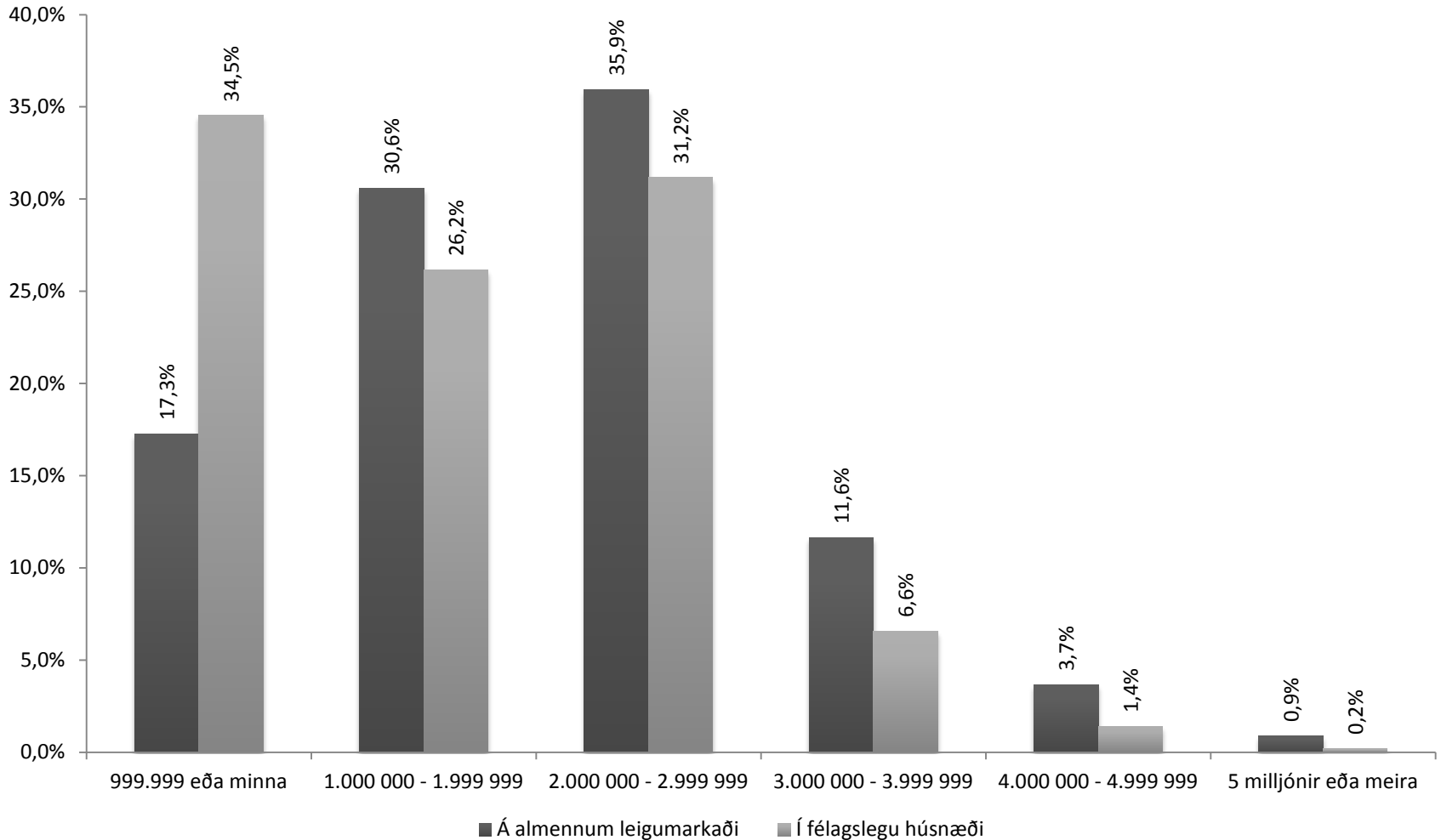
# Húsaleigubótaþegar eftir hjúskaparstöðu



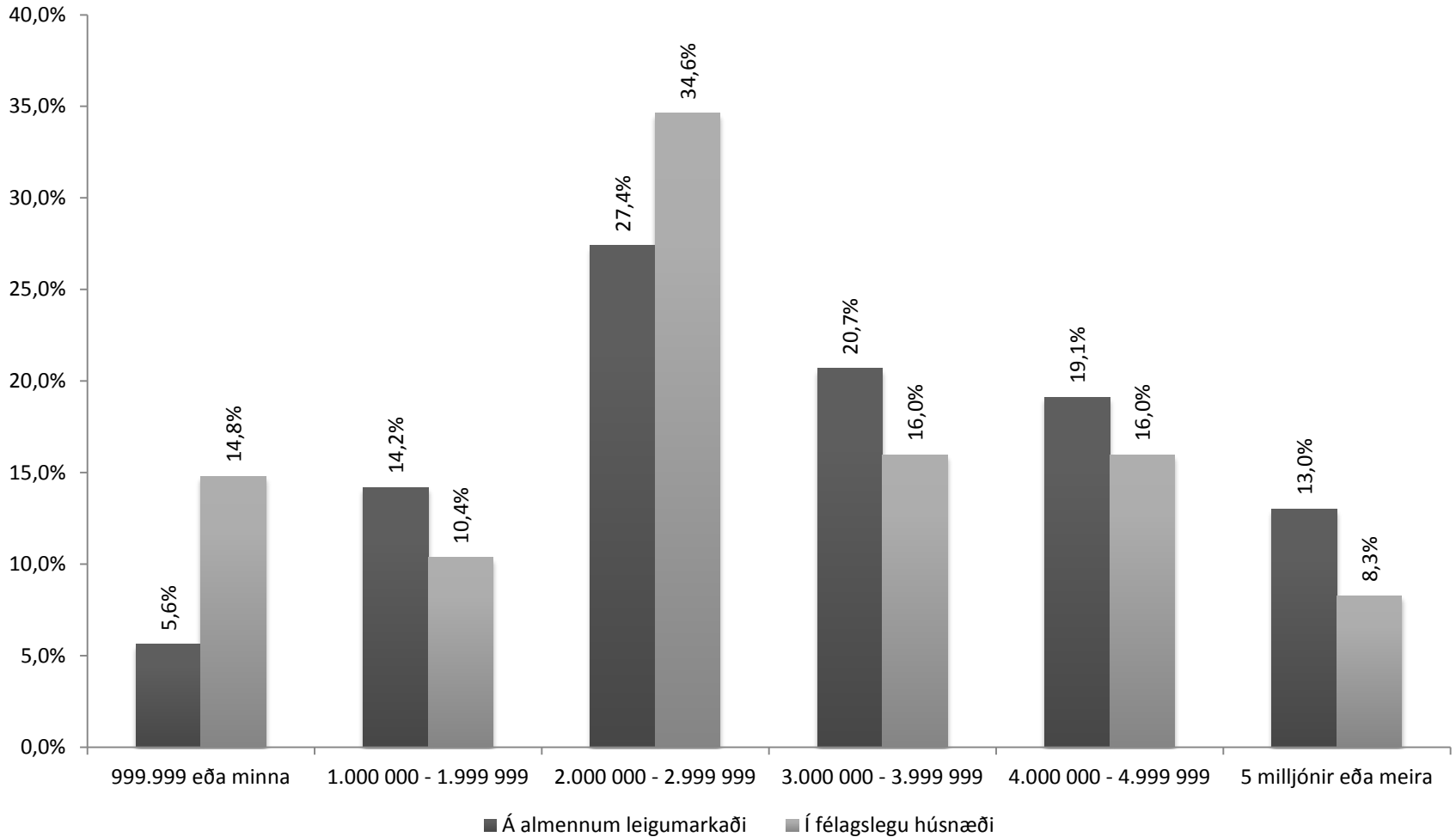
# Húsaleigubótaþegar eftir ríkisfangi



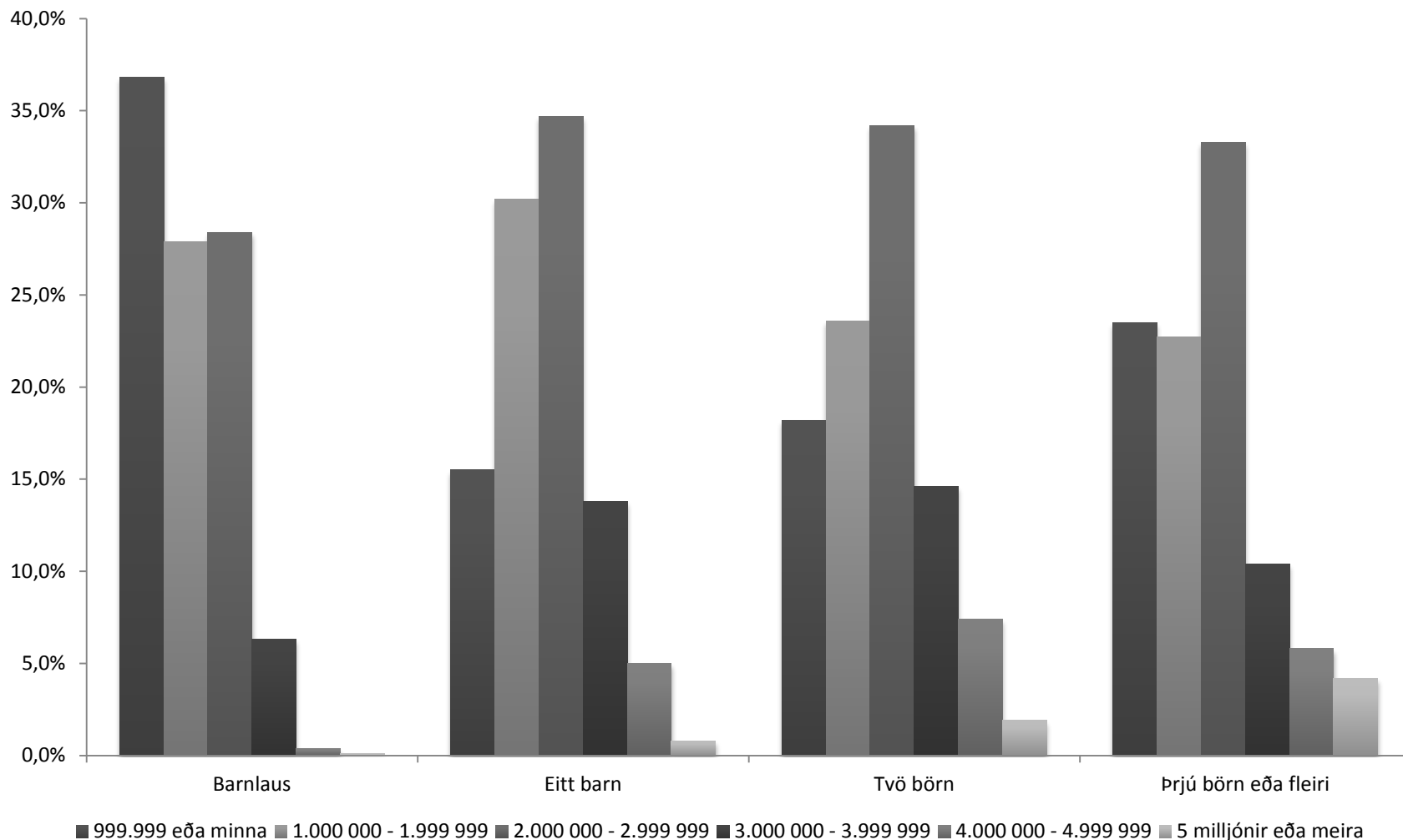
# Skipting húsaleigubótaþega eftir tekjubilum. Einhleypt fólk



# Skipting húsaleigubótaþega eftir tekjubilum. Fólk í hjúskap



# Skipting húsaleigubótaþega á tekjubil. Einhleypir. Eftir fjölda barna



Takk fyrir